



Apple Mechanic's hi-res type routines and fonts are usable in your programs WITHOUT LICENSING FEE. Just give Beagle Bros credit on your disk and documentation.

## APPLE MECHANIC

HI-RES SHAPE EDITOR / TYPE FONT DISK  
by BERT KERSEY

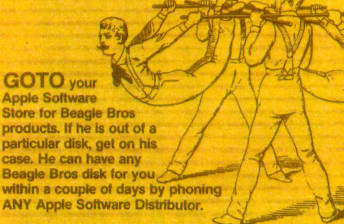
**\$29.50:** Includes Peeks/Pokes Chart & Tip Book #5. **SHAPE EDITOR:** Keyboard-draw hi-res shapes for animation in your Applesoft programs. Access & create proportionally-spaced hi-res Typefaces with each character re-definable as you want. Six fonts are included on the disk. Excellent LISTTable Applesoft demos show you how to animate graphics and create professional-looking Charts and Graphs.

**BYTE-ZAP:** Rewrite any byte on a disk for repair or alteration. Load entire sectors on the screen for inspection. Hex/Dec/Ascii displays and input. Educational experiments included for making trick file names, restoring deleted files, changing DOS, etc. **MORE:** Useful music, text and hi-res tricks for your programs. Clear educational documentation.

## APPLE MECHANIC TYPEFACES

by BERT KERSEY

**\$20.00:** Includes Peeks & Pokes Chart. **26 NEW FONTS** for use with Apple Mechanic programs. Many different sizes and typesetries, both ordinary and artistic. Every character—from A to Z to \* to @—of every typeface—from "Ace" to "Zooloo"—is re-definable to suit your needs. All typefaces are proportionally spaced for a more professional appearance. People do notice the difference! **BEAGLE MENU:** Display only the file names you want from your disks (for example, only Applesoft or only Locked files) for fast one-key cursor selection.



**GOTO** your Apple Software Store for GOTO products. If he is out of a particular disk, get on his case. He can have any Beagle Bros disk for you within a couple of days by phoning ANY Apple Software Distributor.

**RUSH** the following disks by First Class Mail—

- |   |  |
|---|--|
| <input type="checkbox"/> Alpha Plot ..... \$39.50   | <input type="checkbox"/> Frame-Up ..... \$29.50    |
| <input type="checkbox"/> Apple Mechanic ..... 29.50 | <input type="checkbox"/> GPLE ..... 49.95          |
| <input type="checkbox"/> A.M. Typefaces ..... 20.00 | <input type="checkbox"/> ProntoDOS ..... 29.50     |
| <input type="checkbox"/> Beagle Bag ..... 29.50     | <input type="checkbox"/> Silicon Salad ..... 24.95 |
| <input type="checkbox"/> Beagle BASIC ..... 34.95   | <input type="checkbox"/> Tip Disk #1 ..... 20.00   |
| <input type="checkbox"/> DiskQuik ..... 29.50       | <input type="checkbox"/> Utility City ..... 29.50  |
| <input type="checkbox"/> DOS Boss ..... 24.00       |  |
| <input type="checkbox"/> Double-Take ..... 34.95    | <input type="checkbox"/> ADD ME to mailing list.   |
| <input type="checkbox"/> Flex Type ..... 29.50      | <input type="checkbox"/> ALREADY ON mail list.     |

**AT YOUR APPLE DEALER NOW!**  
Or order directly from Beagle Bros—

Visa/MasterCard or COD; call TOLL-FREE  
Orders only / ALL 50 STATES / 24 Hours a Day  
**1-800-522-1500 ext 827**  
OR mail U.S. Check, Money-Order or Visa/MC to  
**BEAGLE BROS**, 8th Floor  
4315 SIERRA VISTA, SAN DIEGO, CA 92103  
Add \$1.50 First Class Shipping, Any-Size Order.  
Overseas add \$4.00. COD add \$3.00. California add 6%.  
ALL ORDERS SHIPPED IMMEDIATELY.

## DOS BOSS

DISK COMMAND EDITOR  
by BERT KERSEY and JACK CASSIDY

**\$24.00:** Includes Peeks/Pokes Chart & Tip Book #2. **RENAME DOS COMMANDS** & Error Messages—"Catalog" can be "Cat", "Syntax Error" can be "Oops" or almost anything you want it to be. **PROTECT YOUR PROGRAMS.** An unauthorized Save-attempt can produce a "Not Copyable" message, or any message you want. Also easy List-Prevention and other useful Apple tips and tricks. Plus one-key program-execution from catalog. **CUSTOMIZE DOS.** Change the catalog Disk Volume heading to your message or title. Omit or alter catalog file codes. Fascinating documentation, tips and educational Apple experiments.

**ANYONE USING YOUR DISKS** (booted or not) will be using DOS the way YOU designed it.



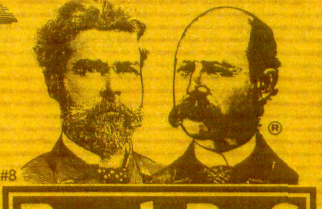
10 LIST: LIST: LIST: FOR ZZ-PEEK(175)+PEEK(176)\*256+36 TO 3072: POKE ZZ.216: NEXT 20 FOR XXX-1 TO 2: POKE-16299:0: POKE-16300:0: XXX-1: NEXT: REM Experiment with different length variable names.

## BEAGLE BAG

12 APPLE GAMES ON ONE DISK  
by BERT KERSEY

**\$29.50:** Includes Peeks & Pokes Chart **COMPARE BEAGLE BAG** with any single-game Locked-Up disk on the market today. All 12 games are a blast, the price is a bargain, the instructions are crystal clear, and the disk is COPYABLE. You can even change the programs or list them to learn programming tricks by seeing how they work.

**TWELVE GAMES** from the Applesoft Ace, Bert Kersey—TextTrain, Wowzo, Magic Pack, Buzzword, Slippery Digits, and many many more... **EXCELLENT REVIEWS**—See Jan-83 Softalk, p.148. Beagle Menu too; see Typefaces description.



## Beagle Bros Micro Software Inc.

4315 SIERRA VISTA / SAN DIEGO, CA 92103  
619-296-6400

**ALL BEAGLE DISKS ARE UNLOCKED, COPYABLE AND COMPATIBLE WITH APPLE II, II+ AND IIe.\***  
(Don't Settle for Less!)

\*DISKQUIK requires Apple IIe.  
"APPLE" is a Registered Trade Mark of You-Know-Who.

## SILICON SALAD

INCLUDING TIP DISK #2  
by BERT KERSEY and MARK SIMONSEN

**\$24.95:** Includes Peeks & Pokes Chart **MANY MINI-UTILITIES:** Disk Scanner finds bad disk sectors. Key-Clicker adds subtle sound as you type. **DOS-Killer** adds two tracks of space to your disks. **2-Track Cat** allows up to 210 file names per disk. **Program Splitter** makes room for hi-res pix with large Applesoft programs. **Text Imprinter** transfers text to the hi-res screen. **Oner! Tel Me** prints the appropriate error message but continues program execution. **Text Screen Formater** converts text layouts into Print statements... plus much more Apple wizardry from the boys at Beagle Bros.

**MORE TIPS ON DISK:** Including fantastic programming tricks from Beagle Bros Tip Books 5, 6 and 7, plus our Tips & Tricks Chart #1.

**TWO-LINERS TOO:** From our customers around the world—and elsewhere. Little mind-blowers that will teach your old Apple some new tricks!

## TIP DISK #1

100 TIP BOOK TIPS ON DISK  
by BERT KERSEY

**\$20.00:** Includes Peeks & Pokes Chart.

**100 LISTABLE PROGRAMS** from Beagle Bros Tip Books 1-4. Make your Apple do things it's never done! All 100 programs are LISTable and changeable for Apple experimentation.

**COMMAND CHART INCLUDED:** Free with each Tip Disk an 11 x 17 poster of all Applesoft, Integer Basic & DOS Commands with Descriptions!



## FLEX TYPE

(FORMERLY FLEX TEXT)  
VARIABLE-WIDTH HI-RES TEXT UTILITY  
by MARK SIMONSEN

**\$29.50:** Includes Peeks & Pokes Chart **PRINT VARIABLE-WIDTH TEXT** on both hi-res screens with normal Applesoft commands (including HTAB 1-70). Normal, expanded & compressed text with no extra hardware. (70-column text requires a monochrome monitor, not a tv).

**ADD GRAPHICS TO TEXT** or add Text to hi-res graphics. Run your existing Applesoft programs under Flex Type control. Fast, easy to use, and Compatible with GPLE and Double-Take.

**DOS TOOL KIT\*** font compatibility, or use the supplied Flex Type typefaces. Select up to 9 fonts with control-key commands. A text character editor lets you redesign any Apple text character.

## FRAME-UP

FAST APPLE DISPLAY UTILITY  
by TOM WEISHAAR

**\$29.50:** Includes Peeks & Pokes Chart **PROFESSIONAL PRESENTATIONS:** Turn your existing Hi-Res, Lo-Res and Text frames into attractive Apple "slide shows." FAST hi-res loads in 2 1/2-seconds! Paddle or Keyboard-advance frames.

**UNATTENDED SHOWS** are optional, with each picture arranged and pre-programmed to display on the screen from 1 to 99 seconds. Custom Text Screen Editor lets you create black-and-white text "slides" and add type "live" from the keyboard during shows. Mail copies of presentations on disk to your friends and associates (or home to Mom!).

## NEW! GPLE

GLOBAL PROGRAM LINE EDITOR  
by NEIL KONZEN

**\$49.95:** Includes Peeks/Pokes Chart & Tip Book #7. **NOW A BEAGLE BROS DISK!** GPLE lets you edit Applesoft program lines FAST without awkward cursor-tracing and "escape editing".

**INSERT & DELETE:** GPLE works like a word processor for Applesoft program lines. You make changes instantly by jumping the cursor to the change point and inserting or deleting text. No need to trace to the end of a line before hitting Return.

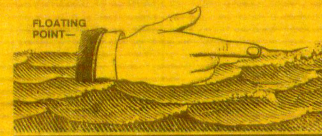
**GLOBAL SEARCH & REPLACE:** Find any word or variable in your programs. FAST. For example, find all lines containing a GOSUB, or edit or delete all lines with REM statements, or all occurrences of any variable. Replace any variable, word or character with any other. For example, change all X's to ABC's, or all "Horse" strings to "Cow".

**80-COLUMN COMPATIBILITY:** All edit & global features support APPLE IIe 80-column cards and most 80-column cards on any Apple IIe, II+ or II.

**DEFINABLE ESC FUNCTIONS:** Define ESC plus any key to perform any task. For example, ESC-1 can catalog drive 1, ESC-C can do a "HOME LIST". ESC-N could type an entire subroutine... Anything you want, whenever you want.

**GPLE DOS MOVIE:** Move DOS and GPLE to Language Card (or Ite upper 16K) for an EXTRA 10,000 BYTES (10K) of programmable memory.

**Plus APPLE TIP BOOK #7:** Learn more about your Apple! Includes all new GPLE tips and tricks.



## UTILITY CITY

21 PROGRAMMING UTILITIES  
by BERT KERSEY

**\$29.50:** Includes Peeks/Pokes Chart & Tip Book #3 **LIST FORMATTER** prints each program statement on a new line. Loops indented with printer. Page Breaks: A great Applesoft program de-bugger. **MULTI-COLUMN CATALOGS,** with or without sector and file codes. Organize your disk library.

**INVISIBLE** and trick catalog file names. Invisible functioning commands in Applesoft programs too. **MUCH MORE:** 21 utilities, including auto-post Run-number & Date in programs, alphabetize/store info on disk, convert dec to hex or Int to FF, protect and append programs, dump text to printer.

**LEARN PROGRAMMING:** List-able programs and informative documentation. Includes Tip Book #3. Hours of good reading & Applesoft experiments!

## ALPHA PLOT

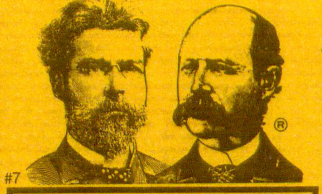
HI-RES GRAPHICS/TEXT UTILITY  
by BERT KERSEY and JACK CASSIDY

**\$39.50:** Includes Peeks/Pokes Chart & Tip Book #4. **DRAW IN HI-RES** on both Apple "pages" using easy keyboard commands OR paddles/joystick. Pre-view lines before plotting. Solid or mixed colors & Reverse (background-opposite) drawing. FAST one-keystroke circles, boxes & ellipses, filled or outlined. Add text for graphs & charts. All six Save-able to disk, to be called from your Applesoft programs.

**COMPRESS HI-RES DATA** to 1/3 disk space (average) allowing more hi-res pictures per disk.

**MANIPULATE IMAGES:** Superimpose any two images, or RE-LOCATE any rectangular section of any drawing anywhere on either hi-res page.

**HI-RES TYPE:** Add text to your pictures with adjustable character-size and large-character color. Type anywhere with no Htab/Vtab limits. Type sideways too, for graphs. Includes Tip Book #4.



## Beagle Bros Micro Software Inc.

4315 SIERRA VISTA / SAN DIEGO, CA 92103  
619-296-6400

**ALL BEAGLE DISKS ARE UNLOCKED, COPYABLE AND COMPATIBLE WITH APPLE II, II+ AND IIe.\***  
(Don't Settle for Less!)

\*DISKQUIK requires Apple IIe.  
"APPLE" is a Registered Trade Mark of You-Know-Who.

## BEAGLE BASIC

APPLESOFT ENHANCER  
by MARK SIMONSEN

**\$34.95:** Includes Peeks/Pokes Chart & Tip Book #6. Requires Apple Ite (OR II/II+ with RAM Card).

**RENAME ANY APPLESOFT COMMAND** or Error Message to anything you want. For program clarification, encryption/protection or even foreign translation. Plus add optional powerful NEW COMMANDS. **ELSE** follows If-Then statements, like this: IF X=2 THEN PRINT "YES": ELSE PRINT "NO"

**HSCRN** reads code of any hi-res dot for collision testing. **SWAP X,Y** exchanges 2 variables' values. New **TONE** command writes music with no messy pokes & calls. **SCRL** scrolls text in either direction. **TX2T** lets Text Page 2 act exactly like Page 1.

**PLUS:** GOTO & GOSUB may precede variables, as in "GOSUB FIX" or "GOTO 4\*X". Escape-mode indicated by special ESC CURSOR. Replace awkward Graphics screen-switch pokes with 1-word commands. Change ctrl-G beep to any tone. **INVERSE REMS** too! All GPLE compatible.



## PRONTO-DOS

HIGH-SPEED DOS / DOS-MOVE UTILITY  
by TOM WEISHAAR

**\$29.50:** Includes Peeks & Pokes Chart **TRIPLES THE SPEED** of disk access and frees 10,000 bytes of extra memory by moving DOS.

Function	Normal Pronto
BLOAD HI-RES IMAGE	10 sec. 3 sec.
LOAD 60-SECTOR PROGRAM	16 sec. 4 sec.
SAVE 60-SECTOR PROGRAM	24 sec. 9 sec.
BLOAD LANGUAGE CARD	13 sec. 4 sec.

(Text Files: No Change)

Boot the Pronto disk or your updated disks, created with the normal INIT command. Compatible with all DOS Commands, GPLE, Double-Take, DOS Boss, Diskquik and almost all unprotected programs.

**MOVE DOS** to your Language Card, RAM Card, or standard Apple Ite upper 16K, freeing up 10,000 EXTRA BYTES of memory for your programs.

**15 EXTRA SECTORS** per disk. Catalog Free-Space displayed every time you catalog a disk. **TYPE-COMMAND** ("TYPE filename") prints contents of any Text File on screen or printer.

## NEW! DISKQUIK

DISK DRIVE EMULATOR  
by HARRY BRUCE and GENE HITE

**\$29.50:** Includes Peeks & Pokes Chart **Requires Apple Ite** with Extended 80-column Card. **ACTS LIKE A DISK DRIVE** in Slot 3, but much faster, quieter, more reliable and \$350 cheaper. Enjoy the benefits of a 2nd (or 3rd or 4th...) drive at less than 1/10th the price. Catalogs normally with "CATALOG, S3" command. Load & Save any kind of files into RAM with normal DOS commands.

**SILENT AND FAST:** Since no moving parts are involved, Diskquik operates silently and at super-high speeds. See it to believe it. Your Apple Ite's Extended 80-column Card (required) can hold about half the amount of data as a 5 1/4" floppy disk!

**MANY USES:** For example, load often-used files, like FID and other utilities, into RAM when you boot up, so they are always available when you need them. Copy files from RAM onto disk and vice versa, just as if a disk drive were connected to slot #3.

**FRIENDLY & COMPATIBLE** with 80-column display, GPLE, ProntoDOS, and all normal Applesoft and DOS commands and procedures. Will not interfere with Apple Ite "Super Hi-Res" graphics.

## DOUBLE-TAKE

2-WAY SCROLL/MULTIPLE UTILITY  
by MARK SIMONSEN

**\$34.95:** Includes Peeks/Pokes Chart & Tip Book #5. **2-WAY SCROLLING:** Listings & Catalogs scroll UP AND DOWN, making file names and program lines much easier to access. Change the Catalog or List scroll-direction at will, with Apple's Arrow keys.

**BETTER LIST FORMAT:** Each program statement lists on a new line for FAST program tracing & de-bugging. Printer-compatible; any column-width. **VARIABLE-DISPLAY:** Displays all of a program's strings and variables with current values.

**CROSS-REFERENCE:** Sorts and displays line numbers where each variable & string appears.

**BETTER RENUMBER/APPEND:** Merges programs (doesn't just connect end-to-end).

**AUTO-LINE-NUMBER,** instant Hex/Dec Converter, Program Stats, Eliminate/Redefine Cursor, Free Space-On-Disk... All GPLE/Pronto compatible.

- |   |  |
|---|--|
| <input type="checkbox"/> Alpha Plot ..... \$39.50   | <input type="checkbox"/> Frame-Up ..... \$29.50    |
| <input type="checkbox"/> Apple Mechanic ..... 29.50 | <input type="checkbox"/> GPLE ..... 49.95          |
| <input type="checkbox"/> A.M. Typefaces ..... 20.00 | <input type="checkbox"/> ProntoDOS ..... 29.50     |
| <input type="checkbox"/> Beagle Bag ..... 29.50     | <input type="checkbox"/> Silicon Salad ..... 24.95 |
| <input type="checkbox"/> Beagle BASIC ..... 34.95   | <input type="checkbox"/> Tip Disk #1 ..... 20.00   |
| <input type="checkbox"/> DiskQuik ..... 29.50       | <input type="checkbox"/> Utility City ..... 29.50  |
| <input type="checkbox"/> DOS Boss ..... 24.00       |  |
| <input type="checkbox"/> Double-Take ..... 34.95    | <input type="checkbox"/> ADD ME to mailing list.   |
| <input type="checkbox"/> Flex Type ..... 29.50      | <input type="checkbox"/> ALREADY ON mail list.     |

**AT YOUR APPLE DEALER NOW!**  
Or order directly from Beagle Bros—



Visa/MasterCard or COD, call TOLL-FREE  
Orders only / ALL 50 STATES / 24 Hours a Day  
**1-800-522-1500 ext 827**

OR mail U.S. Check, Money-Order or Visa/MC to  
**BEAGLE BROS**, 7th Floor  
4315 SIERRA VISTA, SAN DIEGO, CA 92103

Add \$1.50 First Class Shipping, Any-Size Order.  
Overseas add \$4.00. COD add \$3.00. California add 6%.  
ALL ORDERS SHIPPED IMMEDIATELY.